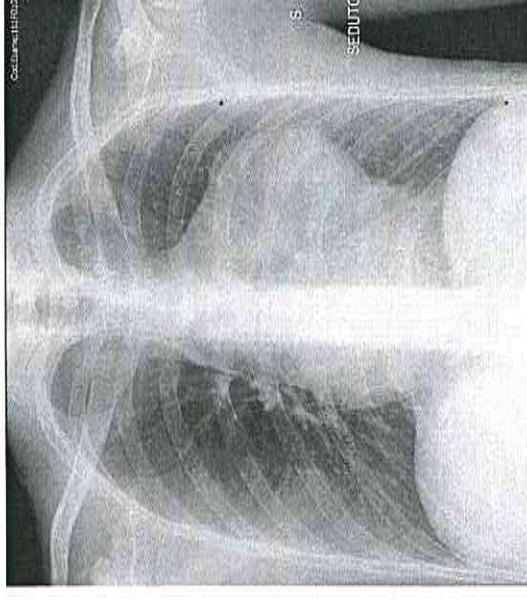


Caso 4

Giovane uomo di 22 aa; giunge in PS per dispnea da sforzo; no dolore toracico; no iperpiressia.

Esegue Rx Torace AP seduto.

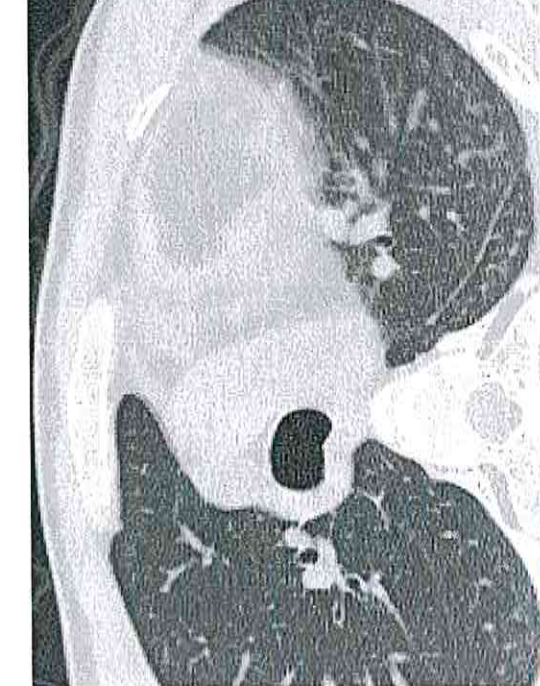
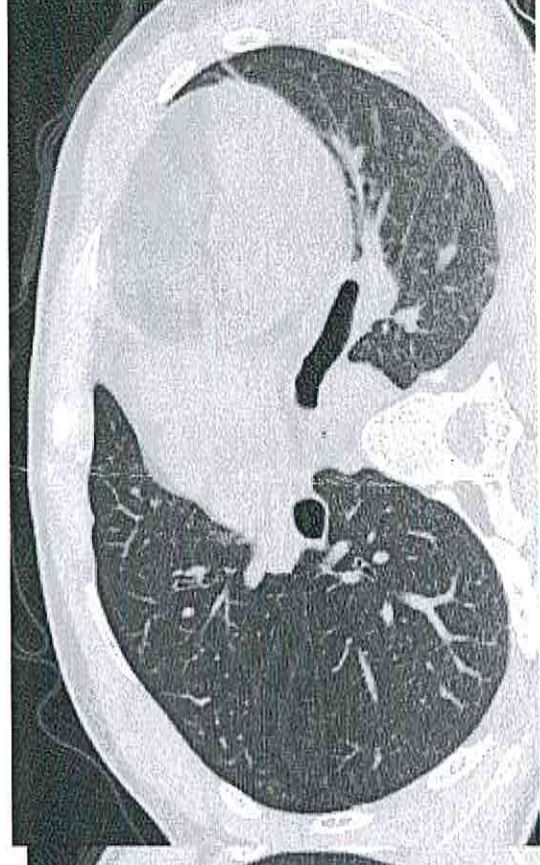
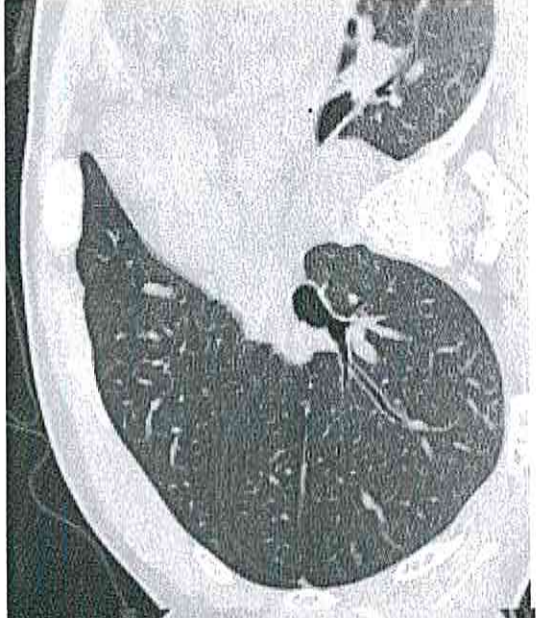
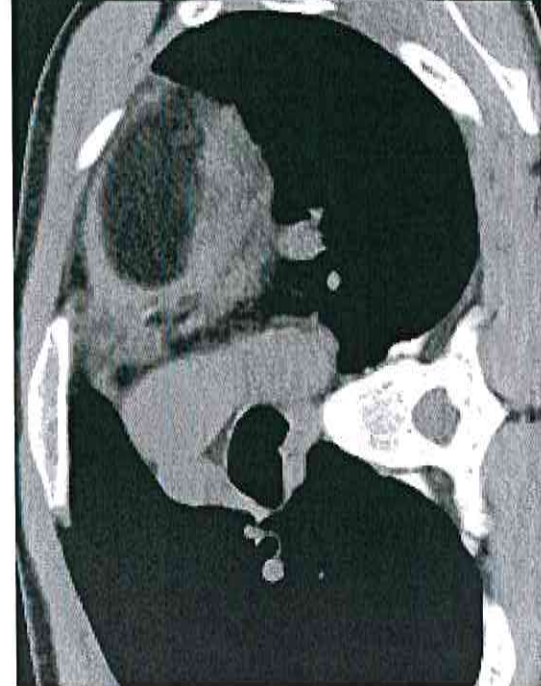
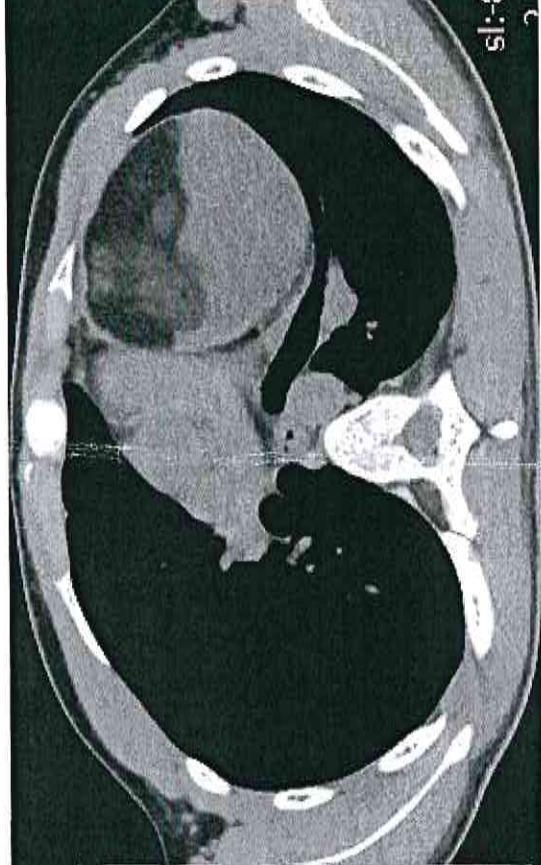
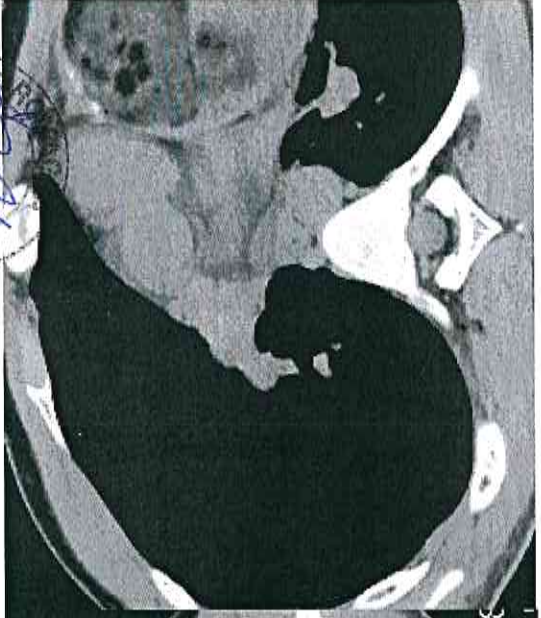
Rx Torace mostra formazione espansiva parailare sinistra

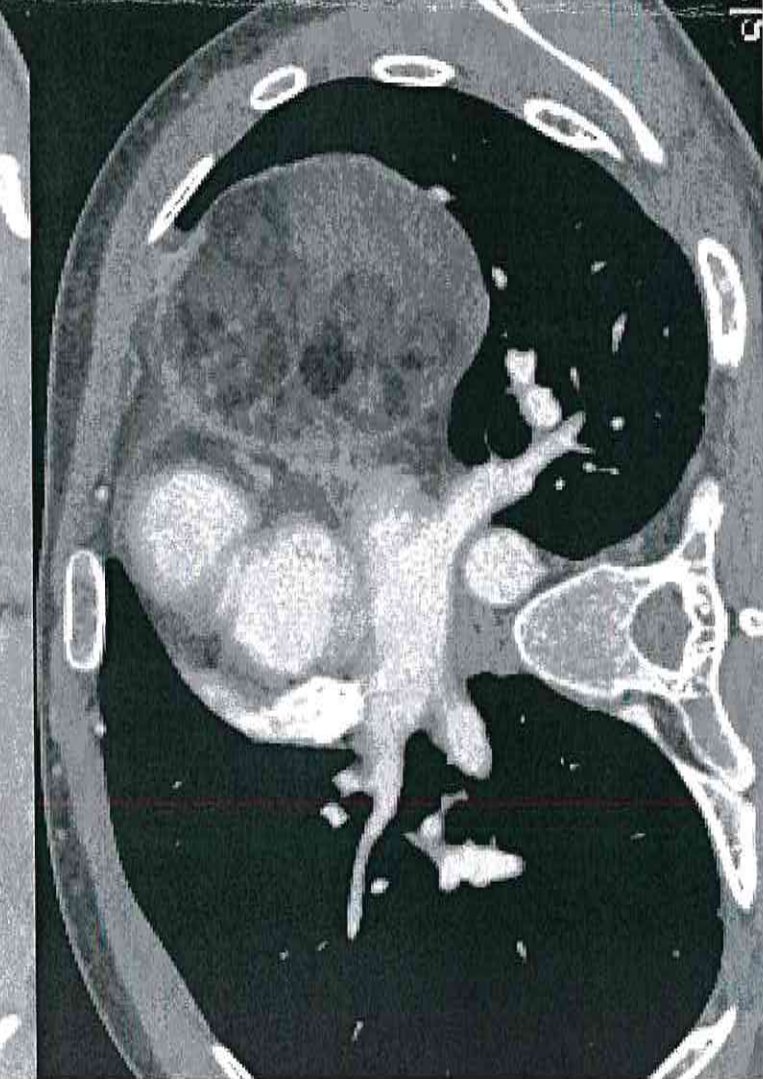
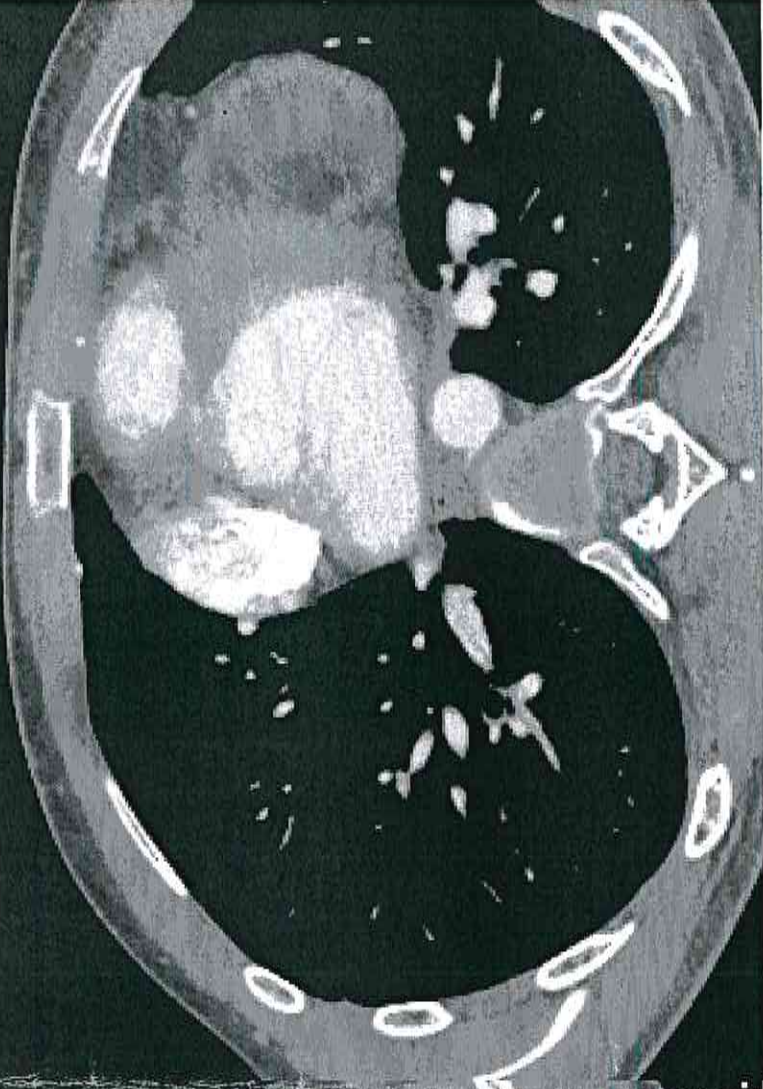


Viene richiesta TC torace senza e con mdc ev.

Handwritten signature and date: *[Signature]* 20/11/15

CASO 4

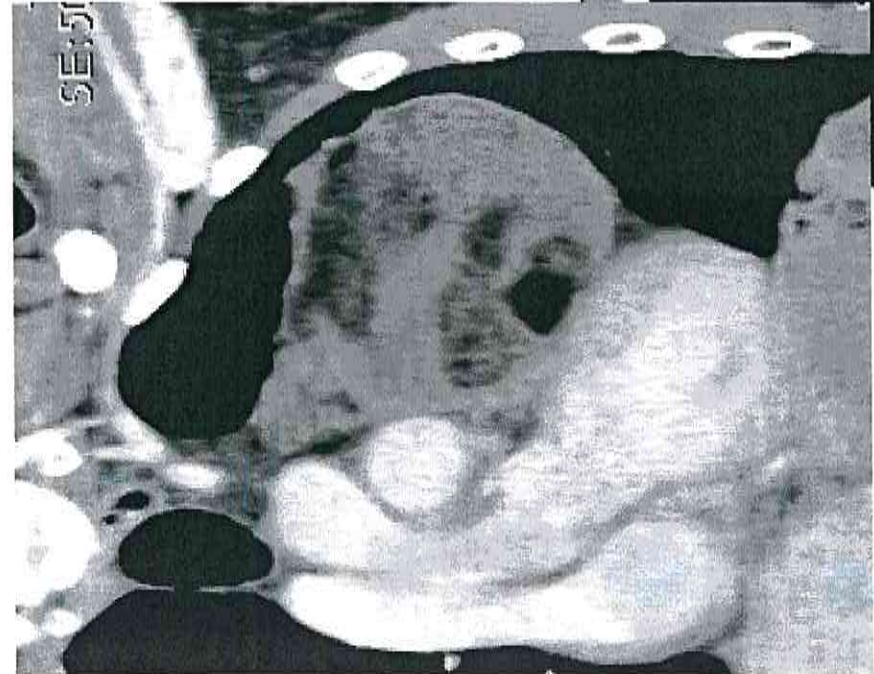
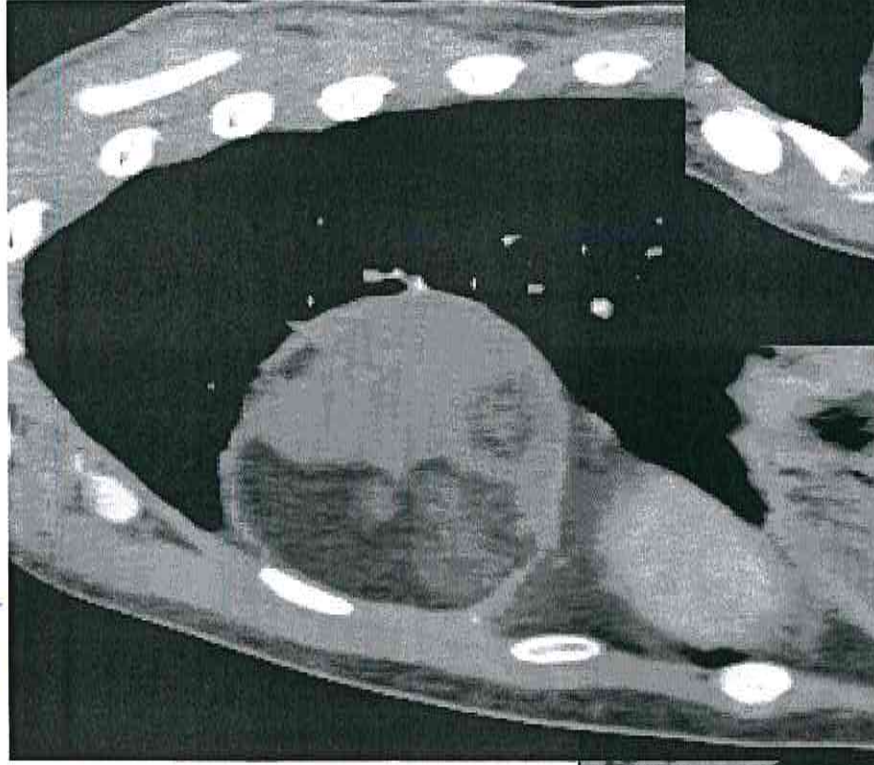
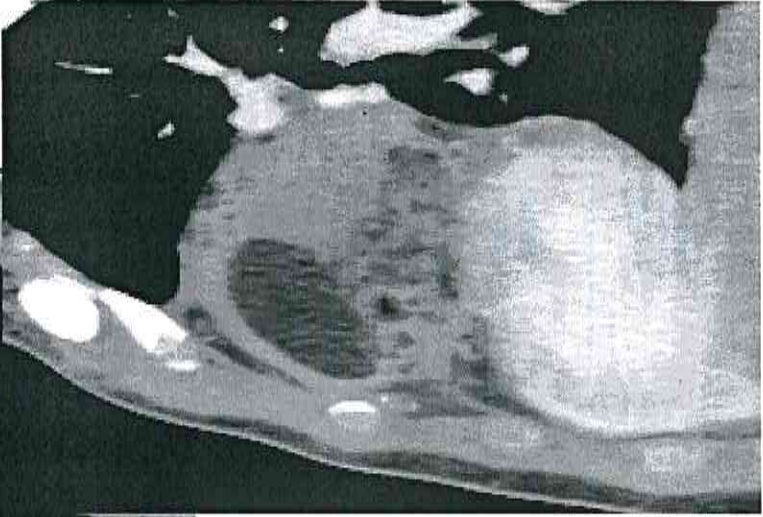




7/15

DRS

13



CASO 4

